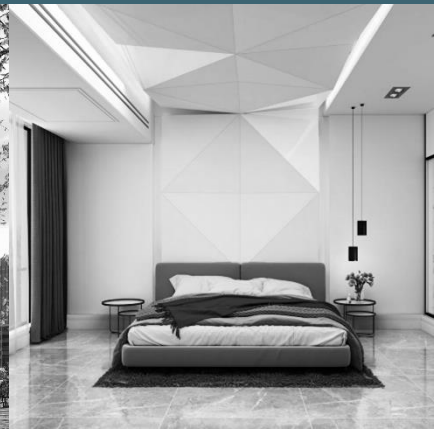
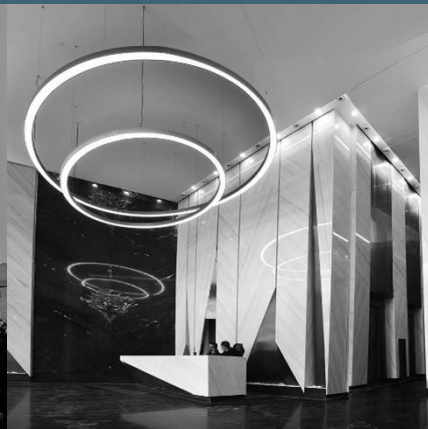
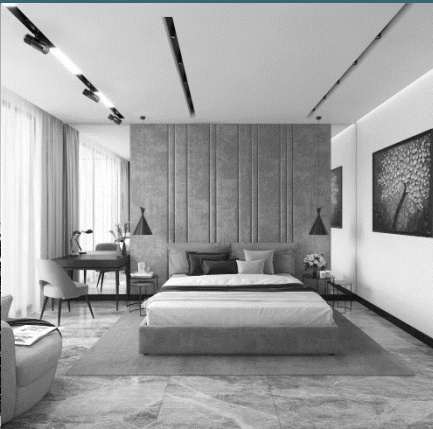


# PADRA Building Group

Architectural Services Department





Setavand House  
Building: 3000sqm | Site: 11000sqm

Under construction



Padra is a Persian word meaning "glorious land".

The core of Padra Building Group has been formed since 2007. Fortunately, over the years, Padra Building Group has been able to successfully provide a wide range of construction project services -inside and outside of Iran- with the reliance on the potential and technical experience of the group of experienced engineers and the trust of its valuable customers.



The main activities of the company:

1. Research
2. Design
3. Interior design
4. Resource sharing & organizational cooperation
5. Supervision
6. Construction
7. Renovation
8. Furnishings and furniture
9. Carrying out projects as EPC
10. Investment in the field of construction

[www.padraoffice.com](http://www.padraoffice.com)







## Our Vision

Creating Glorious and Brilliant Buildings

## Our Mission

Analyzing the best architectural, sustainable and satisfying answers to the client and the designer by incorporation of art and creativity and performing the best roles.

378 | Niavar Center  
40000 sqm

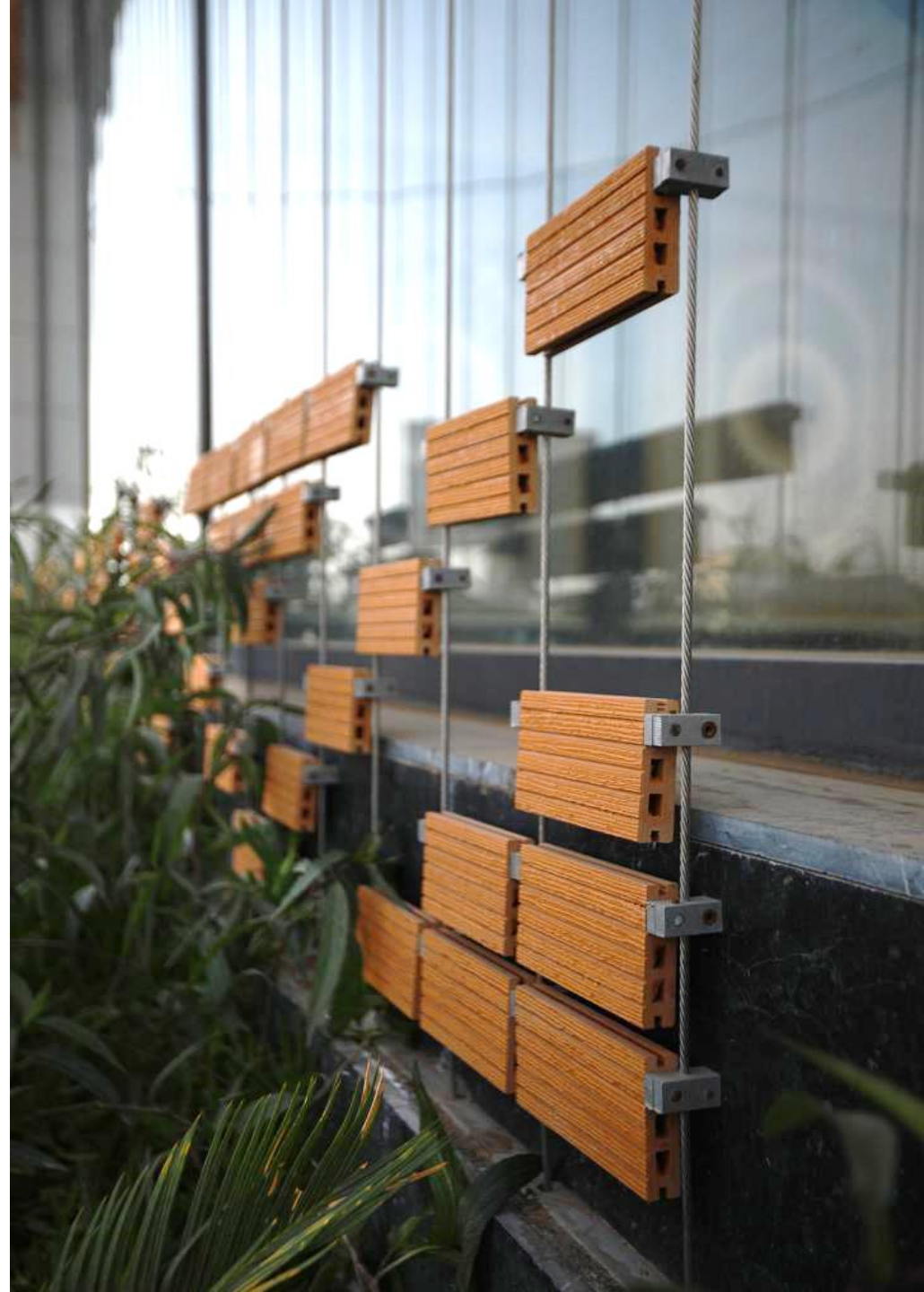
Constructed



## Our Values

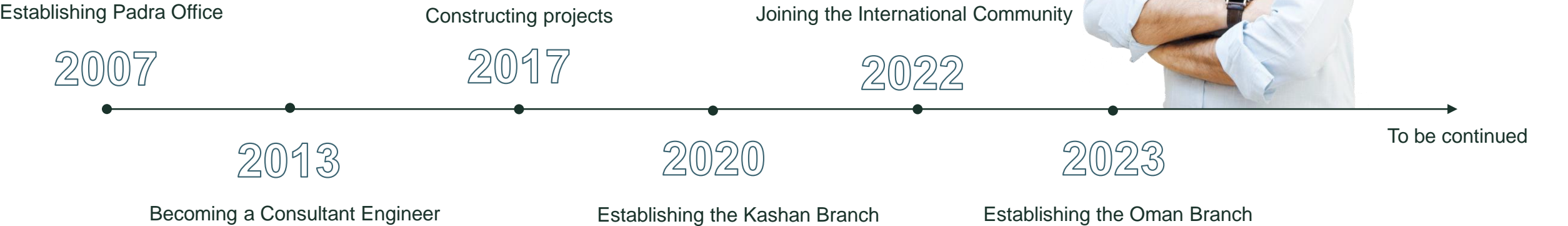
- Honesty
- Innovation
- Quality
- Continuous improvement
- Punctuality
- Interactive cooperation & respect
- Coordination
- Result-oriented
- Communication with clients
- Loyalty

Naghsh-e-Jahan Carpet's Showroom  
2500 sqm  
2019  
Constructed



Mohammad Amin Darooei was born in 1981 in Tehran. After receiving a diploma from Marvi High School -the oldest high school in Tehran- in 2001 and at the same time as he started university studies in the field of architectural engineering, he gained experience in construction companies. He received a master's degree in architecture in Faculty of Fine Arts of University of Tehran, in 2007. In the same year, he established the professional activities of the PADRA team as the construction department of Iran's 1st ranking consulting company and officially registered the leading company, PADRA in 2011, and since then he has been the CEO and the design manager of the company.

In the Engineer Darooei's track record, he cooperated with Bavand, Metra, Baft Shahr, Sakoo, Pars Alsaf, Seatac, Nomad Mobtekar, Haft Bana and numerous private and governmental organizations and bodies, including the Ministry of Science and Research, the Ministry of Petroleum, the Ministry of Housing and Urban Development, the Ministry of Energy, the Ministry of Culture, Mapna Company, the Municipality of Tehran, Pasargad Bank and etc.





## Clients

Ministry of Science and Research of Islamic Republic of Iran

Railway of Islamic Republic of Iran

Raja Passenger Train Company

Iran Water and Power Industries Development Company

Municipality of Tehran

Metra Consulting Engineers

MAPNA Group

Stratos International Contracting Company

Baft-e-Shahr Consulting Engineers

Behsaz Kashane Co., Tehran

Road and Road Transport Organization

Shipping and Ports Organization of Islamic Republic of Iran

Pars Allocation Engineering and Management Company

Nomad Mobtekar Consulting Engineers

Sakoo Consulting Engineers

Khak-o-Sang Co.

Bavand Consulting Engineers

Seatac Consulting Engineers

Tadbir Omran Iranian Consulting Engineers

# 670

Projects



# 1,800,000 m<sup>2</sup>

Total designed



538 | Mr. Carpet's Iran Mall Showroom  
2000 sqm

Constructed





3778 | Niavaran Center  
40000 sqm  
14 Levels  
Constructed





603 | Sisara Residential Complex

21000 sqm

128 Units

120< Unit Area <300

Levels: 9





522 | Pezeshkan Residential Complex  
26000 sqm  
180 Units  
120< Unit Area <240  
Levels: 10







298 | Shirin Official Building  
9000 sqm  
15 Levels  
Constructed



Dariush Carpet  
1750 sqm

Constructed







321 | Kereshme House  
2000 sqm

Constructed

598 | Villa Sohar  
Oman

Under construction





304 | Diamond Complex  
4500 sqm  
280< Unit Area <550  
10 Levels







638 | Azadi Cinema

Under construction



Mr. Carpet – Gilan Province  
3000 sqm  
2022





## 412 | Residence Park Residential

Complex

3800 sqm

160< Unit Area <400

Levels: 8



307 | Amijal Official Complex  
2200 sqm

Constructed





393 | Naghsh-e-Jahan Carpet's  
Showroom  
2500 sqm

Constructed



539 | Farrahi Carpet's Store

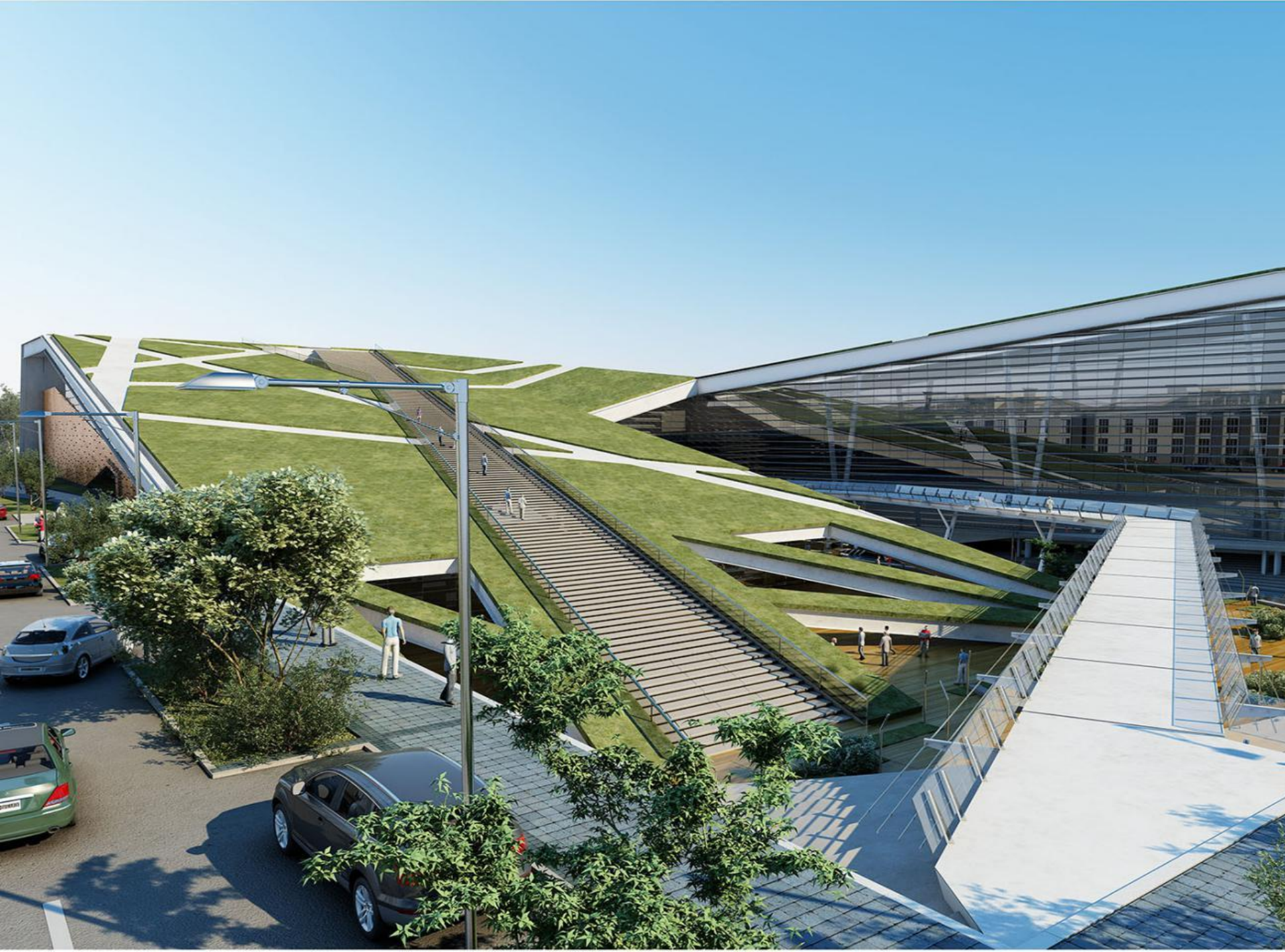
Under Construction





Al-Mahdi Commercial Complex  
6000 sqm

Architectural Competition  
CEO of PADRA with Bavand







611 | House in House  
600 sqm

Designed

307 | Amijal Complex  
2200 sqm

Constructed





591 | Jordan Carpet  
2000 sqm

Under construction







552 | Avishan Villa  
900 sqm

Under construction



495 | Tar-o-Pood House  
800 sqm

Under construction





475 | Royaei House  
700 sqm  
Under construction







359 | Anarestan House  
800 sqm

Constructed



304 | Diamond Complex  
4500 sqm  
2020  
Under construction





- 1- Ansari House
- 2- Architect House
- 3- Mazoochi House
- 4- Darband House
- 5- Parastoo Residential Complex
- 6- Farrahi Carpet Showroom
- 7- Nematli House
- 8- Park Official Complex
- 9- Shaban House
- 10- Central Library of Bojnord
- 11- Mr. Carpet Showroom
- 12- Aran Complex
- 13- Dream House
- 14- Royaei House
- 15- Central Real Estate of Iran Zamin
- 16- Qazi House
- 17- Pars Residential
- 18- Shaban House
- 19- Commercial and Health Center
- 20- Lasa Tire Agency
- 21- Khak Najafi House
- 22- Enayat House
- 23- Shaban House
- 24- Motaghi House
- 25- Sepand Tehran Commercial-Official Complex
- 26- Yasaman Clinic
- 27- Homafaran Commercial Complex

[www.padraoffice.com](http://www.padraoffice.com)  
[@Padraoffice](#)

Tehran +982122877895  
+982122877926  
+989122350455  
Kashan +983155343139



[Padraoffice@yahoo.com](mailto:Padraoffice@yahoo.com)

Unit2, No3, Central 8th Alley, Masjed Jame St.,  
Negarestan 8th St., Pasdaran St., Tehran, Iran  
Unit 2, floor 2, Silk Building, Amerieh Sq., Kashan, Iran